

Citrix Netscaler configuration for Receiver

Contents

- [1 Introduction](#)
- [2 Prerequisites](#)
- [3 Netscaler 10.x Configuration for Receiver](#)
- [4 Citrix Access Standard Edition Gateway RADIUS authentication](#)
- [5 Citrix Access Advanced Edition Gateway RADIUS authentication](#)
- [6 Known Issues and Limitations](#)

Introduction

Citrix Receiver is a lightweight software client that allows access to virtual desktops and apps including Windows, Web or SaaS apps on any PC, Mac, netbook, tablet or smartphone.

For further information on using Receiver see [Citrix Receiver](#)

Prerequisites

Citrix receiver Client

Swivel Appliance or Server

Citrix Netscaler

Netscaler 10.x Configuration for Receiver

To allow Primary and Secondary Authentication using Citrix receiver clients the following policies are required. On the Netscaler Access Gateway select Netscaler Gateway then Virtual Servers, click on the required server then Open. Click on the Authentication tab, and create a policy for RADIUS authentication and a Policy for LDAP authentication for the Primary and Secondary authentication. The below assumes that the Primary authentication server is LDAP and the secondary authentication server is RADIUS for methods other than Receiver authentication.

Configure NetScaler Gateway Virtual Server

Name*

IP Address*

Protocol*

Port*

Network VServer Range Failed Login Timeout

Max Users

SmartAccess Mode Basic Mode AppFlow Logging Down state flush Double Hop

Max Login Attempts

Certificates

Authentication

Bookmarks

Policies

Intranet Applications

Intranet IPs

Published Applications

Ad

User Authentication

If your NetScaler Gateway is to be deployed in a manner where user authentication is not desired, you may turn off authentication below. Please apply this option with CAUTION.

Enable Authentication

Authentication Policies

Primary

Secondary

Group Extraction

Priority	Policy Name	Expression	P
90	policy_RADIUS_primary	REQ.HTTP.HEADER User-Agent CONTAINS Receiver	S
100	policy_LDAP_primary	REQ.HTTP.HEADER User-Agent NOTCONTAINS Receiver	W

Details

No item selected.

 Insert Policy  Unbind Policy  Regenerate Priorities

Comments

 Help

Configure NetScaler Gateway Virtual Server

Name* IP Address*

Protocol* Port*

Network VServer Range Failed Login Timeout Max Users

SmartAccess Mode Basic Mode AppFlow Logging Down state flush Double Hop Max Login Attempts

Certificates | Authentication | Bookmarks | Policies | Intranet Applications | Intranet IPs | Published Applications | Advanced

User Authentication

If your NetScaler Gateway is to be deployed in a manner where user authentication is not desired, you may turn off authentication below. Please apply this option with CAUTION.

Enable Authentication

Authentication Policies

Primary | Secondary | Group Extraction

Priority	Policy Name	Expression	...
90	policy_RADIUS_secondary	REQ.HTTP.HEADER User-Agent NOTCONTAINS Receiver	S
100	policy_LDAP_secondary	REQ.HTTP.HEADER User-Agent CONTAINS Receiver	W

Details

No item selected.

Insert Policy Unbind Policy Regenerate Priorities

Comments

Help

To create the Policy, click on Insert Policy, then from the drop down Tab below Policy name, click on Insert Policy and enter the following:

Name Name of the Policy

Authentication Type Usually LDAP and the RADIUS authentication servers

Server The authentication server for the above

Under Expression click on Add and select the following:

Expression Type General

Flow Type REQ

Protocol HTTP

Qualifier Header

Operator CONTAINS or NOTCONTAINS

Value Receiver

Header Name

Click on OK then create. Double click on the Priority to set the priority to 90 or 100 as appropriate.

Create policies for each as below.

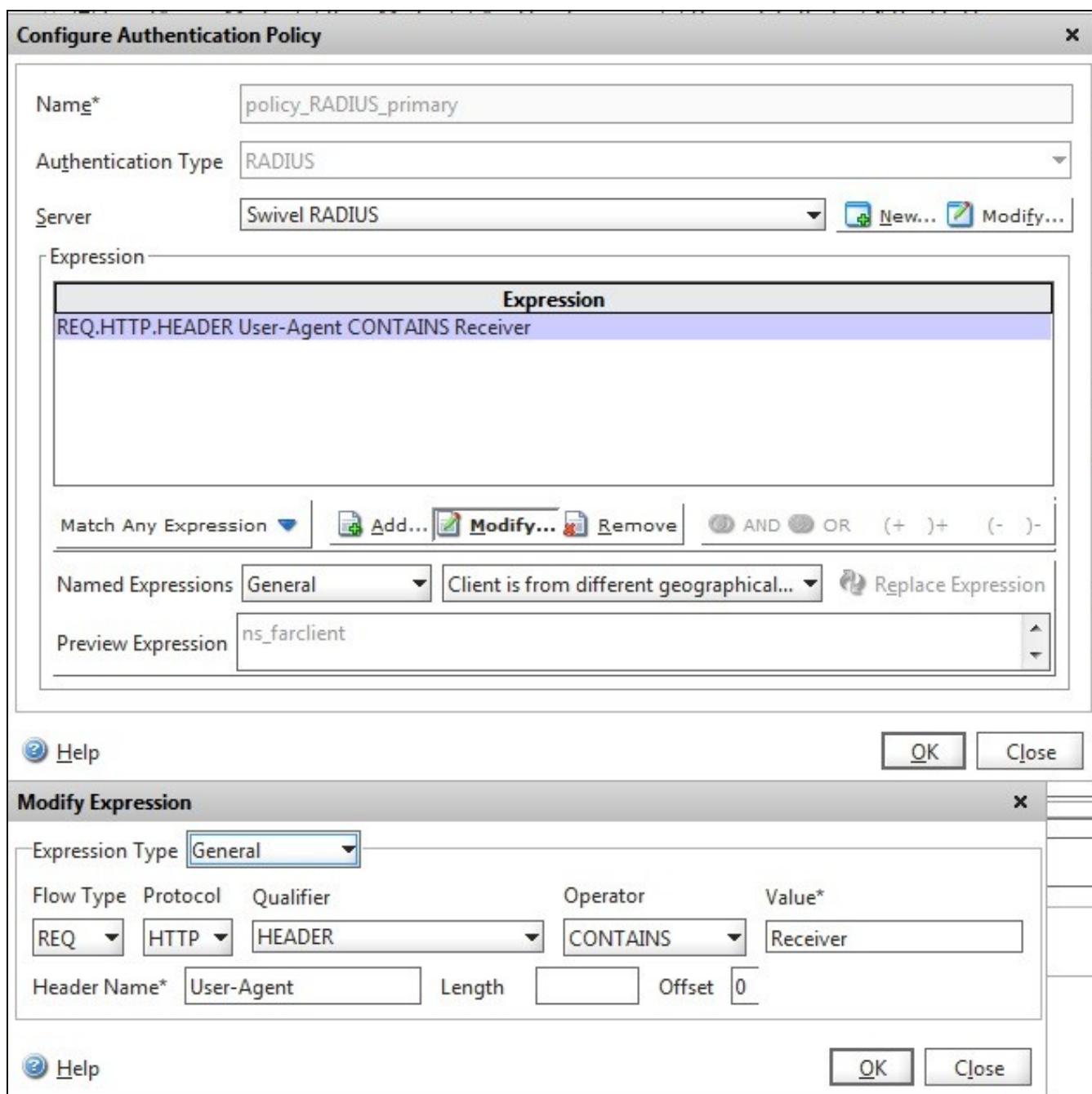
Receiver settings for Netscaler 10.0 and 10.1

Authentication Server	Protocol	Priority	Value
Primary	LDAP	90	REQ.HTTP.HEADER User-Agent NOTCONTAINS CitrixReceiver
Primary	RADIUS	100	REQ.HTTP.HEADER User-Agent CONTAINS CitrixReceiver
Standby	LDAP	90	REQ.HTTP.HEADER User-Agent CONTAINS CitrixReceiver
Standby	RADIUS	100	REQ.HTTP.HEADER User-Agent NOTCONTAINS CitrixReceiver

Multiple Authentication servers can be created by multiple entries of the same priority, such as AD servers.

Receiver settings for Netscaler 10.5

Authentication Server	Protocol	Priority	Value
Primary	LDAP	90	(REQ.HTTP.HEADER User-Agent NOTCONTAINS CitrixReceiver && REQ.HTTP.HEADER Referer EXISTS) (REQ.HTTP.HEADER User-Agent CONTAINS CitrixReceiver && REQ.HTTP.HEADER User-Agent CONTAINS HTML5)
Primary	RADIUS	100	REQ.HTTP.HEADER User-Agent CONTAINS CitrixReceiver
Standby	LDAP	90	REQ.HTTP.HEADER User-Agent CONTAINS CitrixReceiver
Standby	RADIUS	100	REQ.HTTP.HEADER User-Agent NOTCONTAINS CitrixReceiver (REQ.HTTP.HEADER User-Agent CONTAINS CitrixReceiver && REQ.HTTP.HEADER User-Agent CONTAINS HTML5)



Citrix Access Standard Edition Gateway RADIUS authentication

The following article describes adding RADIUS authentication to the Citrix Access Standard Edition for Citrix Receiver. The RADIUS authentication needs to be set as the primary authentication and AD as the Secondary authentication.

<http://support.citrix.com/article/CTX121093>

Citrix Access Advanced Edition Gateway RADIUS authentication

The following article describes adding RADIUS authentication to the Citrix Access Advanced Edition for Citrix Receiver.

<http://cdn.ws.citrix.com/wp-content/uploads/2009/08/iphone-receiver-admin.pdf>

Known Issues and Limitations

It has been observed by our customers that the Citrix Receiver only launches successfully on the Android platform when accessing links via the Mozilla Firefox browser (at the time this article was written)