

# Ericom PowerTerm WebConnect

## Contents

- 1 Introduction
- 2 Prerequisites
- 3 Baseline
- 4 Architecture
- 5 Installation
  - ◆ 5.1 Swivel Integration Configuration
    - ◇ 5.1.1 Configuring the RADIUS server
    - ◇ 5.1.2 Setting up the RADIUS NAS
  - ◆ 5.2 Ericom PowerTerm WebConnect Integration
    - ◇ 5.2.1 RADIUS Server Configuration
    - ◇ 5.2.2 Configuring Applications
  - ◆ 5.3 Additional Installation Options
- 6 Verifying the Installation
- 7 Uninstalling the Swivel Integration
- 8 Troubleshooting
- 9 Known Issues and Limitations
- 10 Additional Information

## Introduction

This article describes how to integrate Swivel with the PowerTerm WebConnect by [Ericom](#) using SMS, Mobile Client and the Taskbar utility. It is not possible to embed the Single Channel within the login page.

## Prerequisites

Swivel 3.3

PowerTerm WebConnect

## Baseline

Swivel 3.9

## Architecture

Ericom PowerTerm WebConnect authenticates users by using RADIUS authentication against Swivel.

## Installation

### Swivel Integration Configuration

#### Configuring the RADIUS server

Configure the RADIUS settings using the RADIUS configuration page in the Swivel Administration console by selecting RADIUS Server. To turn on RADIUS authentication set **Server Enabled** to YES. The Host or IP address is the interface which will accept RADIUS requests, leave this blank (or use 0.0.0.0) to allow RADIUS requests on any interface.

For troubleshooting RADIUS debug can be enabled together with the debug log option, see [Debug how to guide](#)

Note: for appliances, the Swivel VIP should not be used as the server IP address, see [VIP on PINsafe Appliances](#)

## RADIUS>Server

Please enter the details for the RADIUS server.

Server enabled:	<input type="text" value="Yes"/>
IP address:	<input type="text" value="0.0.0.0"/>
Authentication port:	<input type="text" value="1812"/>
Accounting port:	<input type="text" value="1813"/>
Maximum no. sessions:	<input type="text" value="50"/>
Permit empty attributes:	<input type="text" value="No"/>
Filter ID:	<input type="text" value="No"/>
Additional RADIUS logging:	<input type="text" value="Both"/>
Enable debug:	<input type="text" value="Yes"/>
Radius Groups:	<input type="text" value="Yes"/>
Radius Group Keyword:	<input type="text" value="POLICY"/>

### Setting up the RADIUS NAS

Set up the NAS using the Network Access Servers page in the Swivel Administration console. Enter a name for the VPN server. The IP address has been set to the IP of the VPN appliance, and the secret ?secret? assigned that will be used on both the Swivel server and VPN RADIUS configuration.

## RADIUS>NAS

Please enter the details for any RADIUS network access servers. A NAS is permitted to access the authentication via the RADIUS interface.

NAS Identifier:	<input type="text" value="Device Name"/>
Hostname/IP:	<input type="text" value="192.168.0.1"/>
Secret:	<input type="password" value="••••••"/>
EAP protocol:	<input type="text" value="None"/>
Group:	<input type="text" value="---ANY---"/>
Authentication Mode:	<input type="text" value="All"/>
Change PIN warning:	<input type="text" value="No"/>

You can specify an EAP protocol if required, others CHAP, PAP and MSCHAP are supported. All users will be able to authenticate via this NAS unless authentication is restricted to a specific repository group.

## Ericom PowerTerm WebConnect Integration

### RADIUS Server Configuration

Launch the PowerTerm WebConnect Administration Console and go to the Main Configuration (Files | Configuration | Main).

In the [ConnectionPoint=Internet] section set the option AuthenticationMethod=Radius.

This setting specifies that connections to this Connection Point will be authenticated with RADIUS.

Configure settings for the RADIUS connection

**Radius\_server** Address of the Swivel RADIUS server

**Radius\_port (UDP)** port that the Radius server is listening on. Default: 1812

**Radius\_sec\_timeout** timeout to wait for response from the Radius server. Default: 2

**Radius\_retries** number of times to retry sending of the authentication request if a timeout occur. Default: 3

**Radius\_secret** RADIUS server's secret password as entered in the NAS section of Swivel.

Restart the PowerTerm WebConnect Server service.

### Configuring Applications

Go to applicable published application's Advanced section (applicable applications are those that will be used by users authenticating with RADIUS). Uncheck the option Use WebConnect User Credentials. Place %u in the Username field, and %X?Network Password? in the Password field.

Uncheck the option ?Use Default Domain?

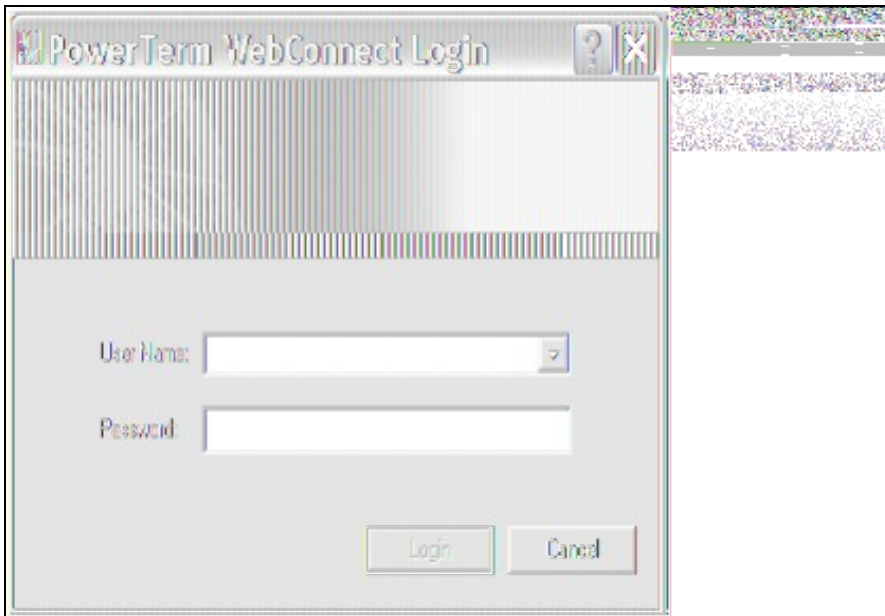
NOTE: Network Password should be entered exactly as is, do not replace the text with a user's password. There needs to be a space between - ?Network? and ?Password?



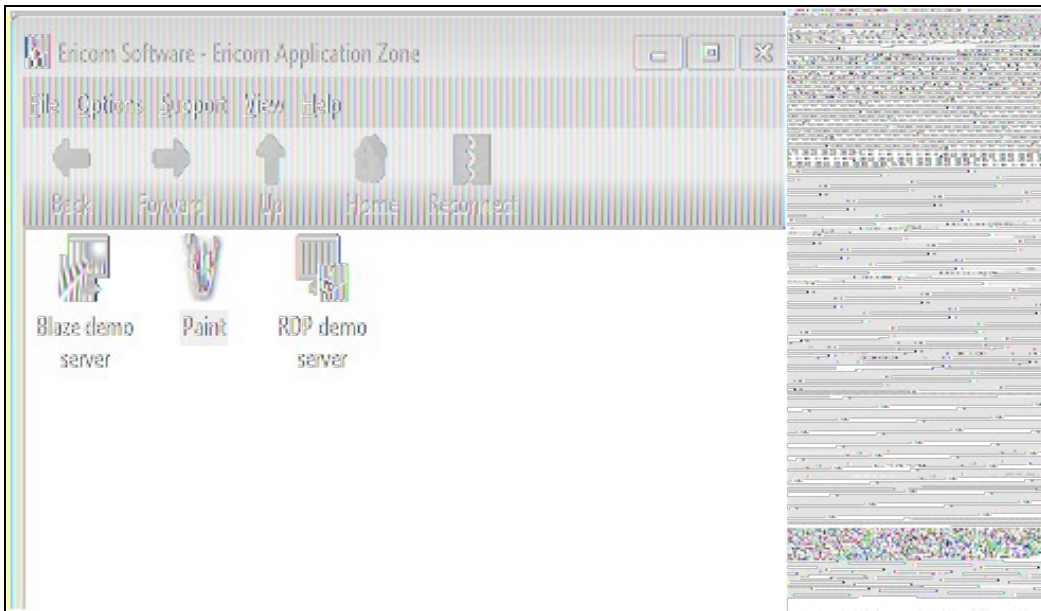
## Additional Installation Options

## Verifying the Installation

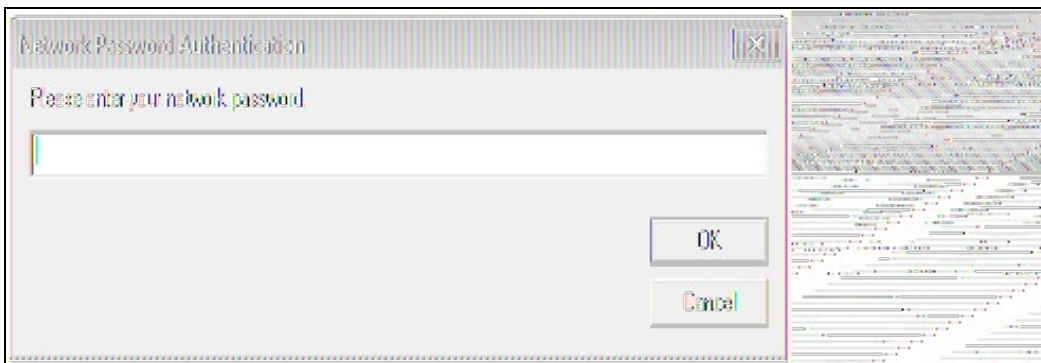
When users launch the Application Zone they will see the following screen, should log in with their username and Swivel One Time Code.



If the authentication is successful, the Application Zone will open displaying the users applications.



The first time the user launched an application, they will be prompted for their network password, as shown below.



The application will then open.

## Uninstalling the Swivel Integration

Remove the RADIUS authentication for applications, check the option Use WebConnect User Credentials and remove the RADIUS server settings.

## Troubleshooting

### Known Issues and Limitations

### Additional Information