

# VMWare Converter How to Guide

## Contents

- 1 VMware Converter How To Guide
- 2 Overview
- 3 VMware format
- 4 VMware OVF Tool
- 5 Converting the VMware Format
- 6 Troubleshooting

## VMware Converter How To Guide

### Overview

This outlines how to convert a PINsafe VMware image into an ESXi server using the VMware converter. For further information on importing and using the PINsafe VMware see [VMWare How To Guide](#)

### VMware format

The PINsafe appliance is distributed as a OVF file.

It is necessary to convert the OVF to VMDK.

### VMware OVF Tool

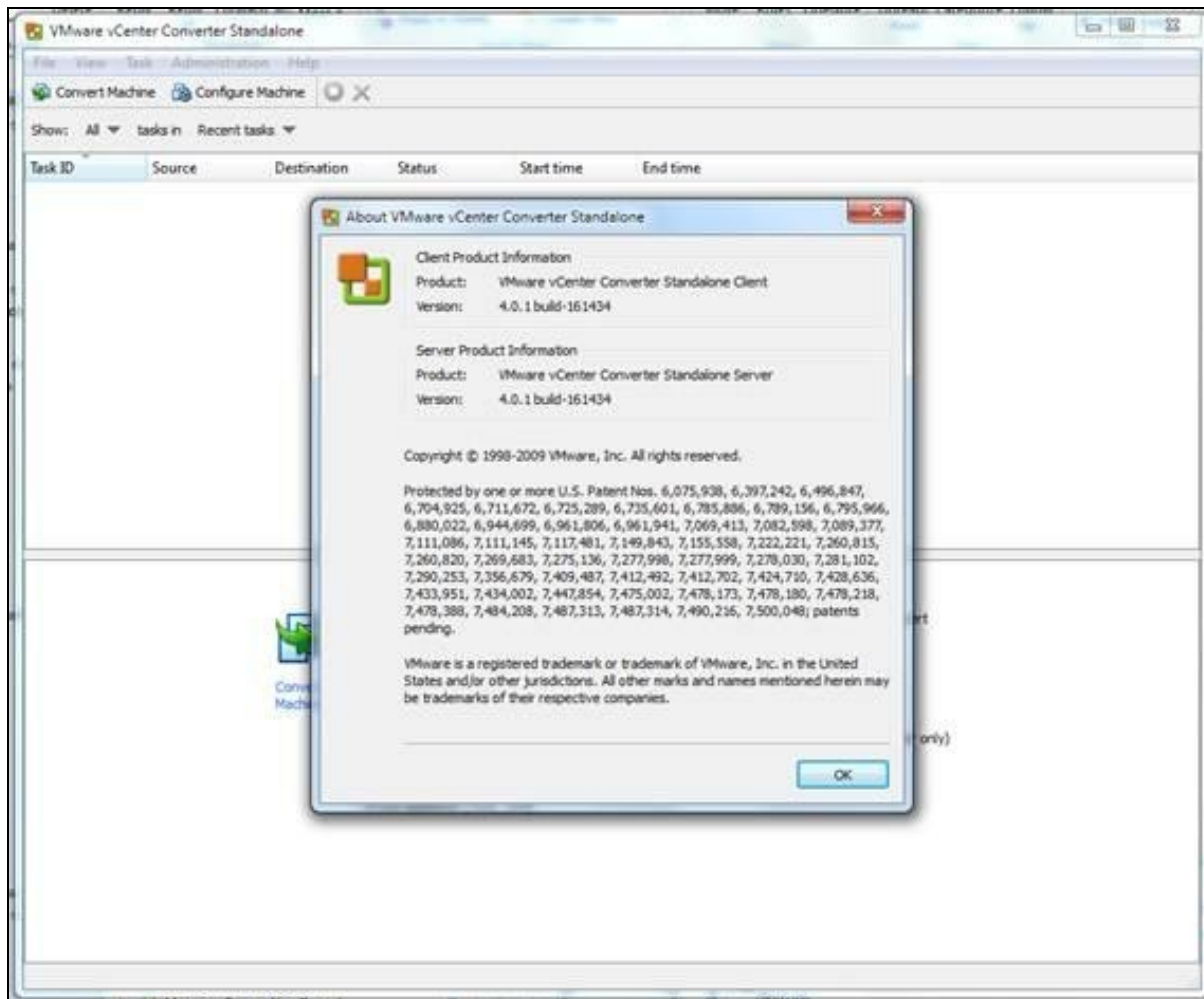
To convert OVF to VMware products use the VMWare stand-alone converter.

Unfortunately, the current version of the converter is not compatible with the distributed appliance. You need to use version 4.0.1 of the standalone converter, which is no longer available from VMWare. You can get it from our website:

<http://fs.swivelsecure.com/files/vmware/VMware-converter-4.0.1-161434.exe>

### Converting the VMware Format

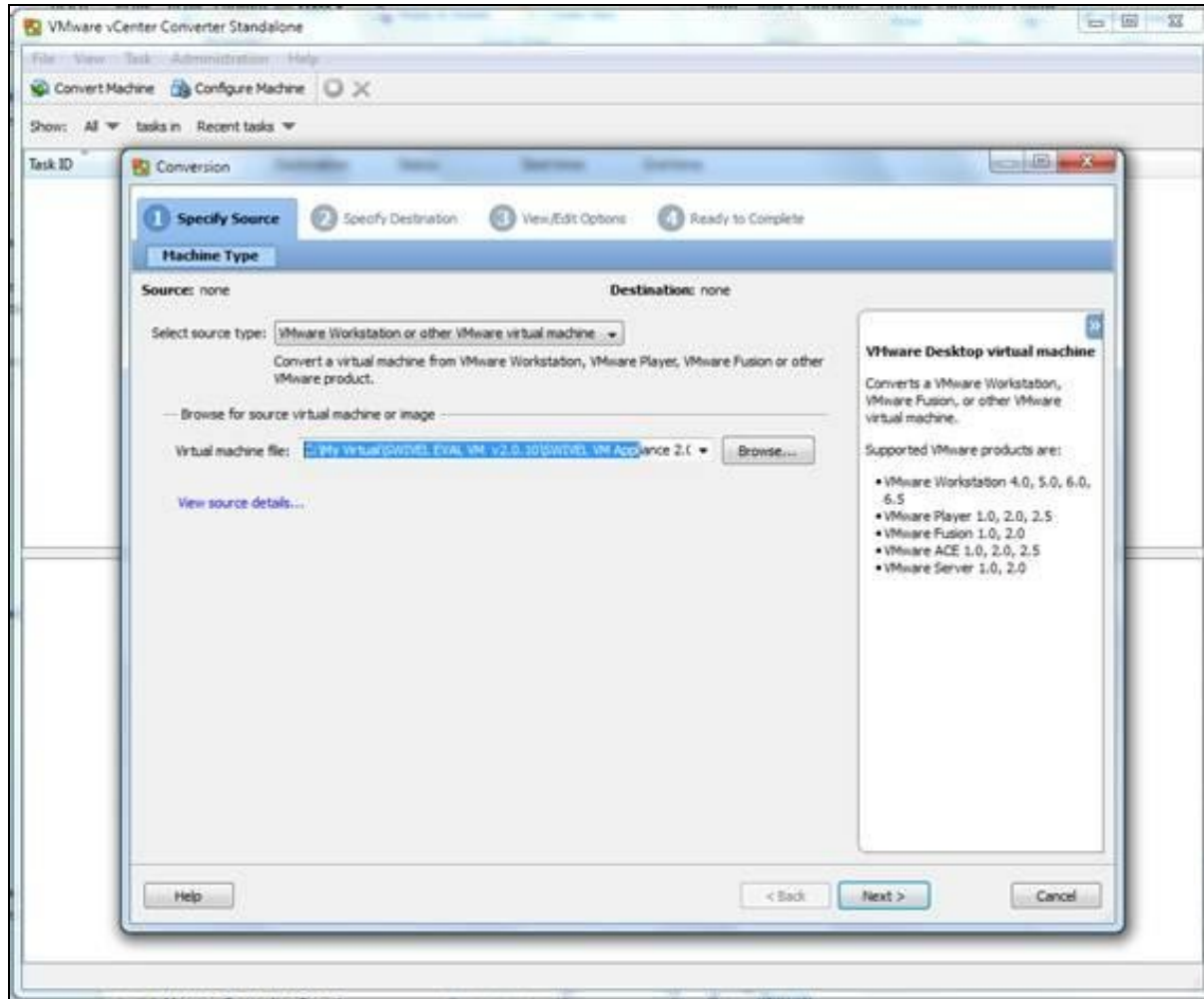
In this case we going to use VMWARE vCENTER Converter Standalone Server v 4.0.1



## Configuration **STEP 1**

In the converter Select Convert Machine, then select Source type: Virtual Appliance

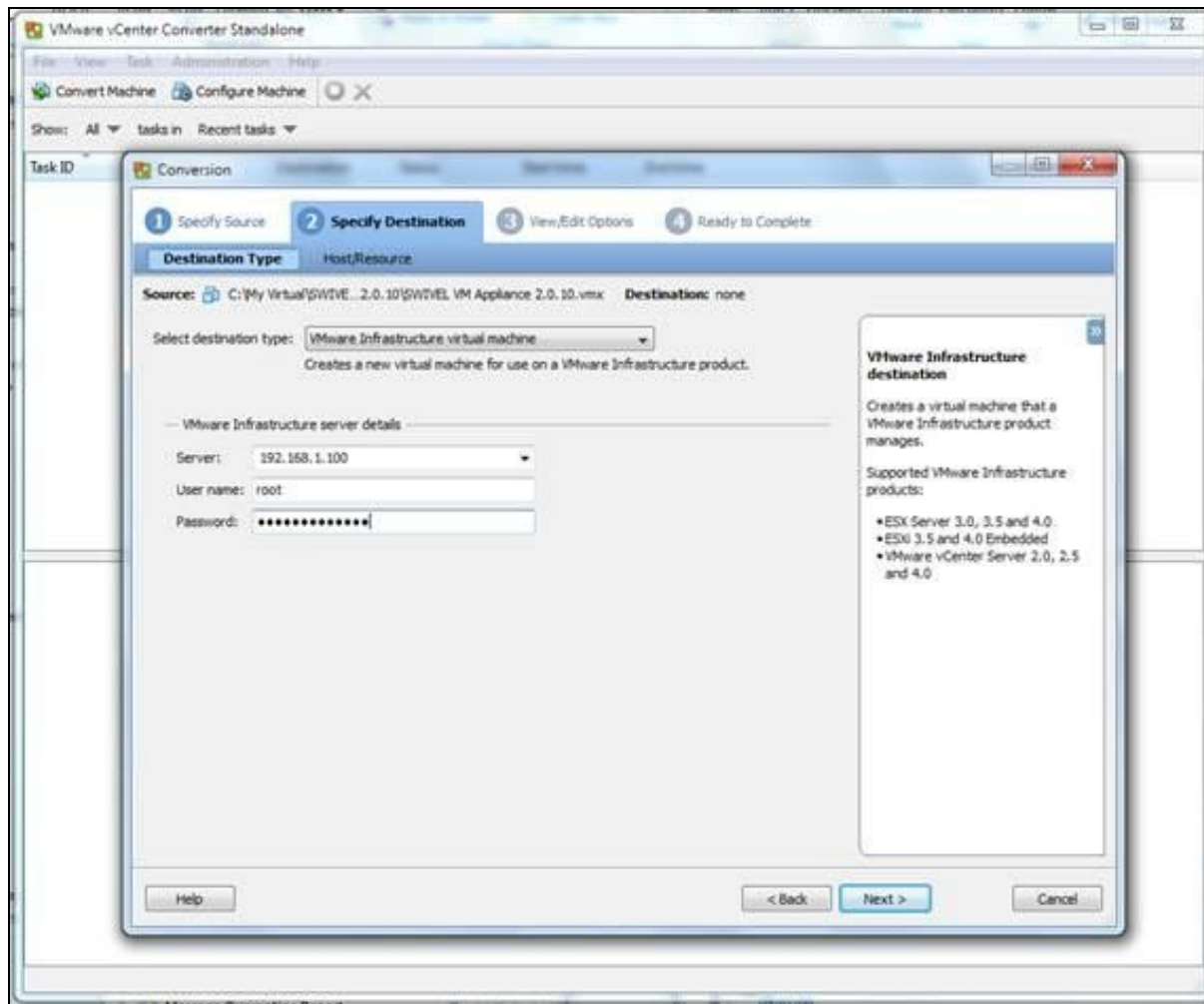
Enter the Virtual machine file: (Browse to the location SWIVEL VM Appliance), then click Next.



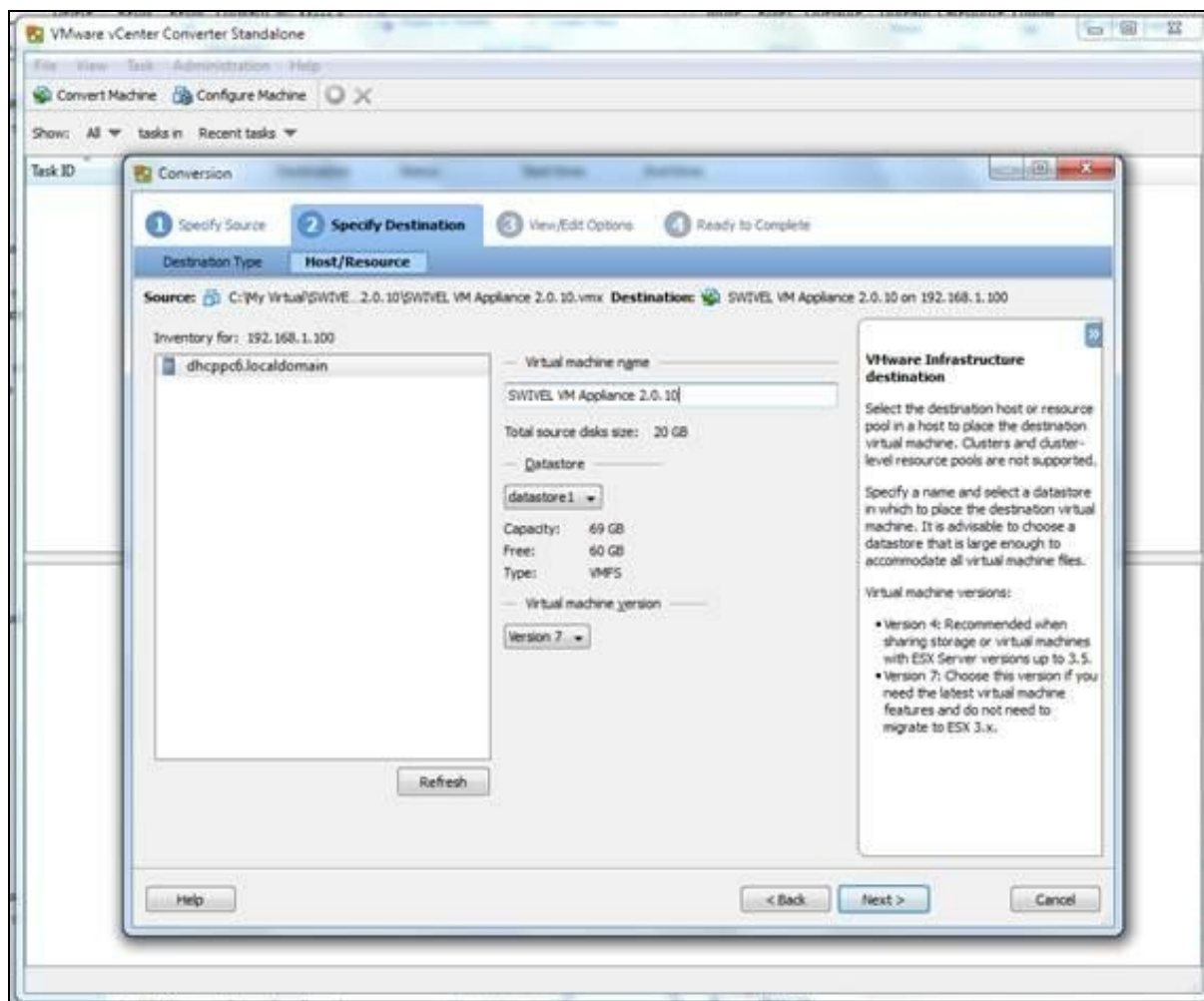
## Configuration **STEP 2**

Select destination type: VMWARE Infrastructure Virtual Machine

Enter the VMware infrastructure server details, IP/hostname, Username, Password for the ESXi server, then click Next

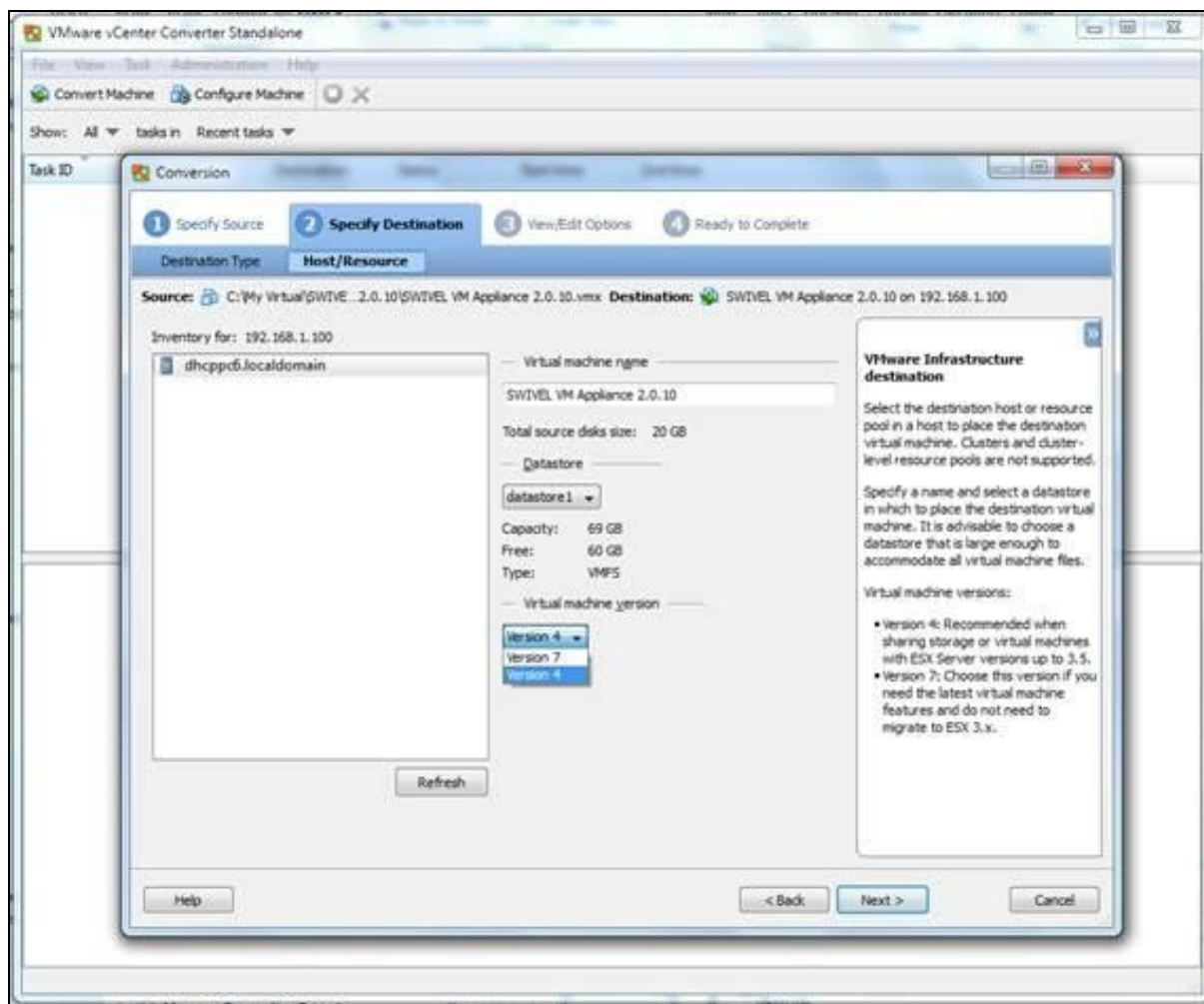


If the credentials are correct then the ESXi details are seen

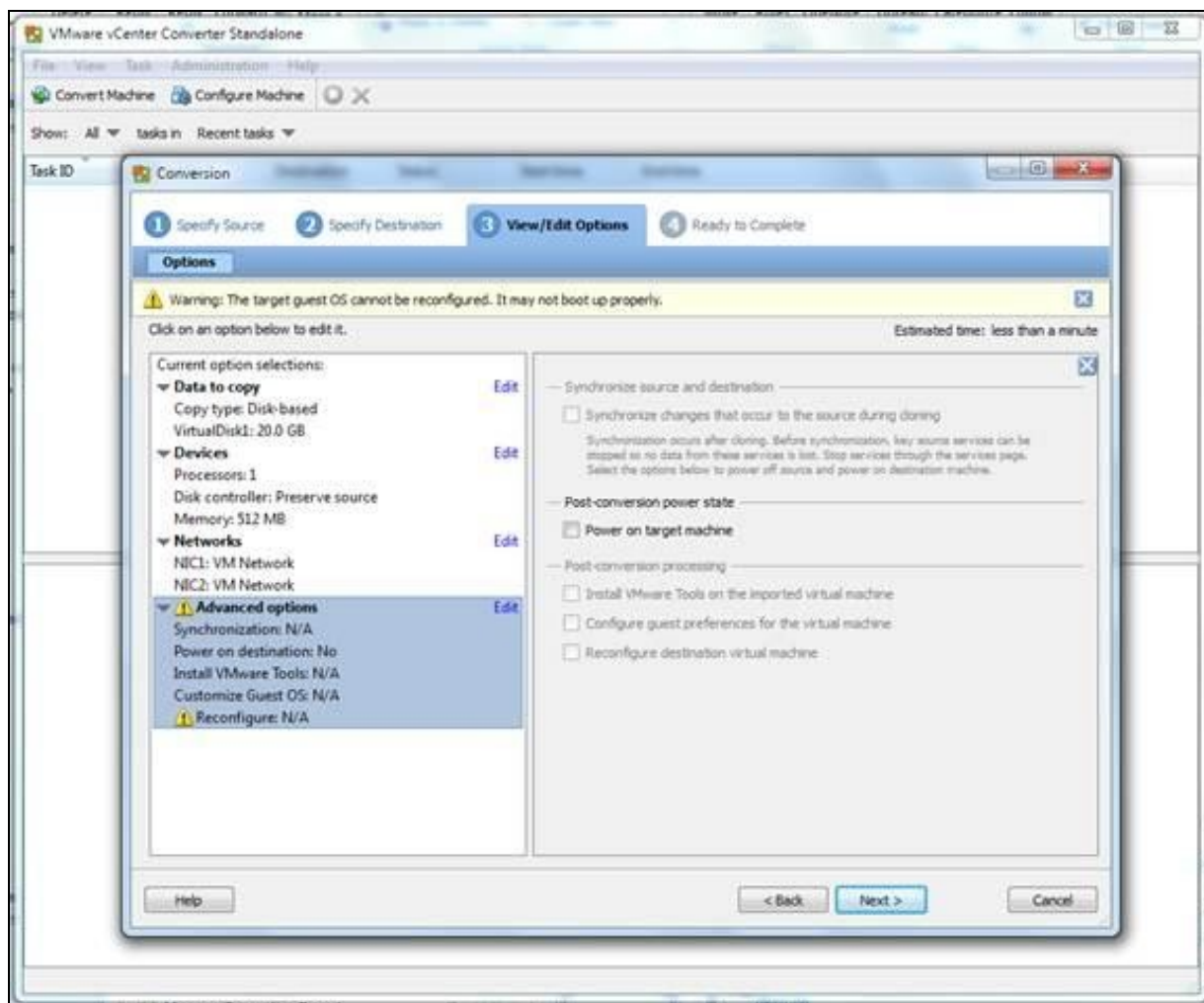


Enter the Virtual machine version, for ESXi 3.5 or 4 select Version 4 then click on Next.

Configuration **STEP 3**

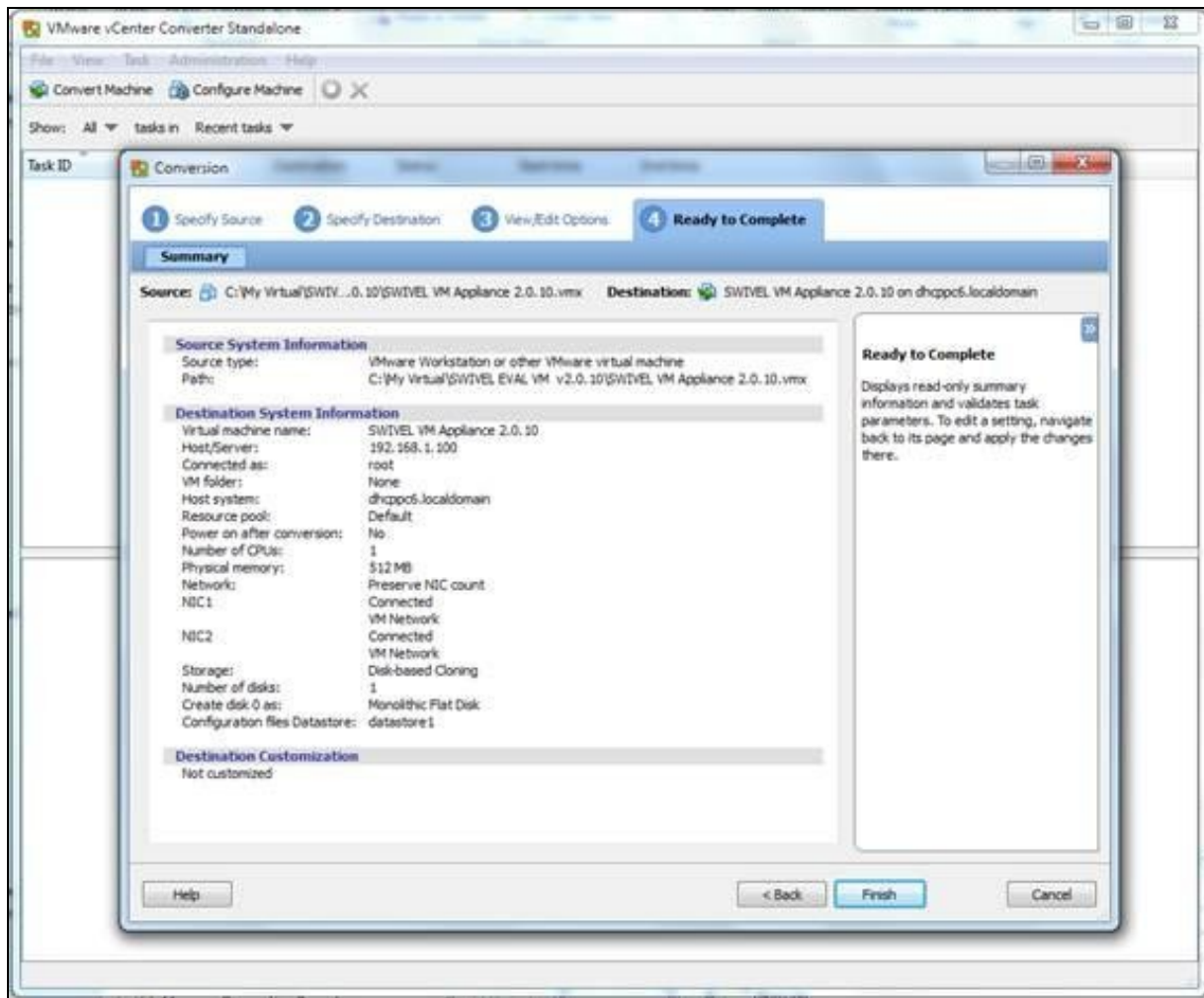


VMware Convert may not detect the OS, this can be ignored and click Next.



#### Configuration **STEP 4**

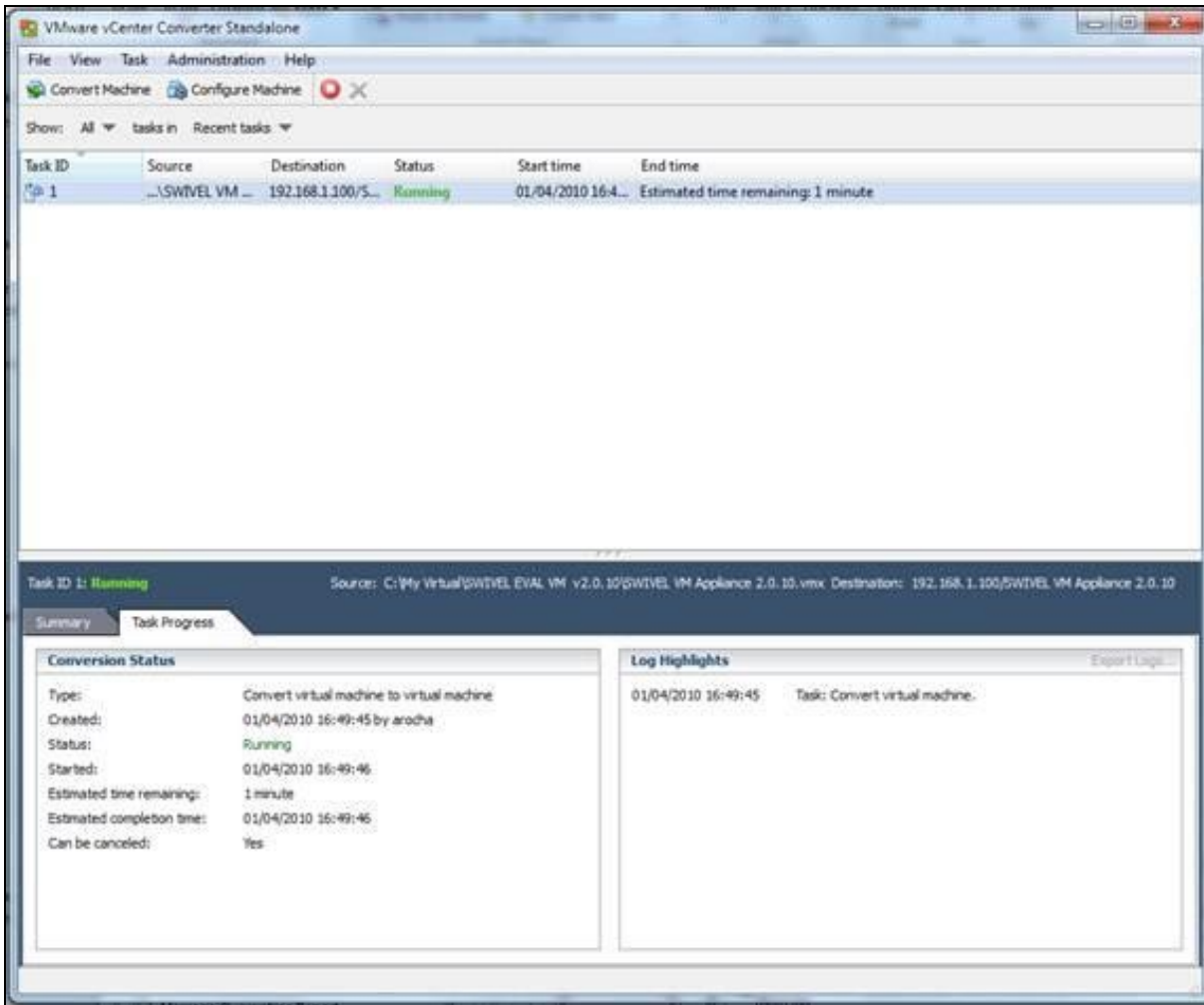
A summary of the information is then displayed, if all details are correct click on Finish to start the conversion.



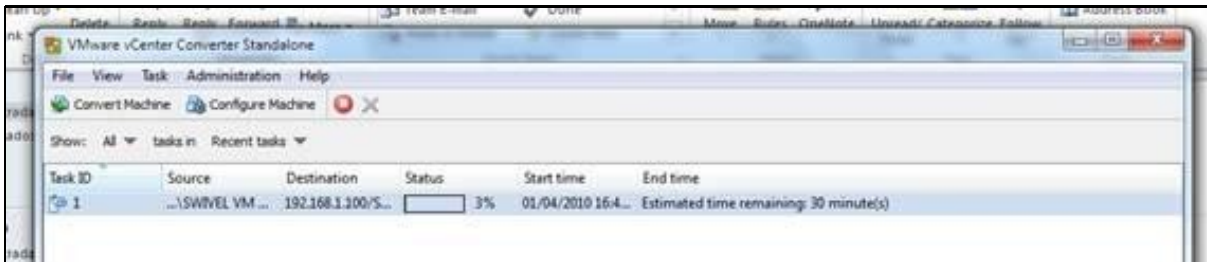
The VMware conversion process starts.

If conversion fails at this point, you may need to delete the .mf file and try again.



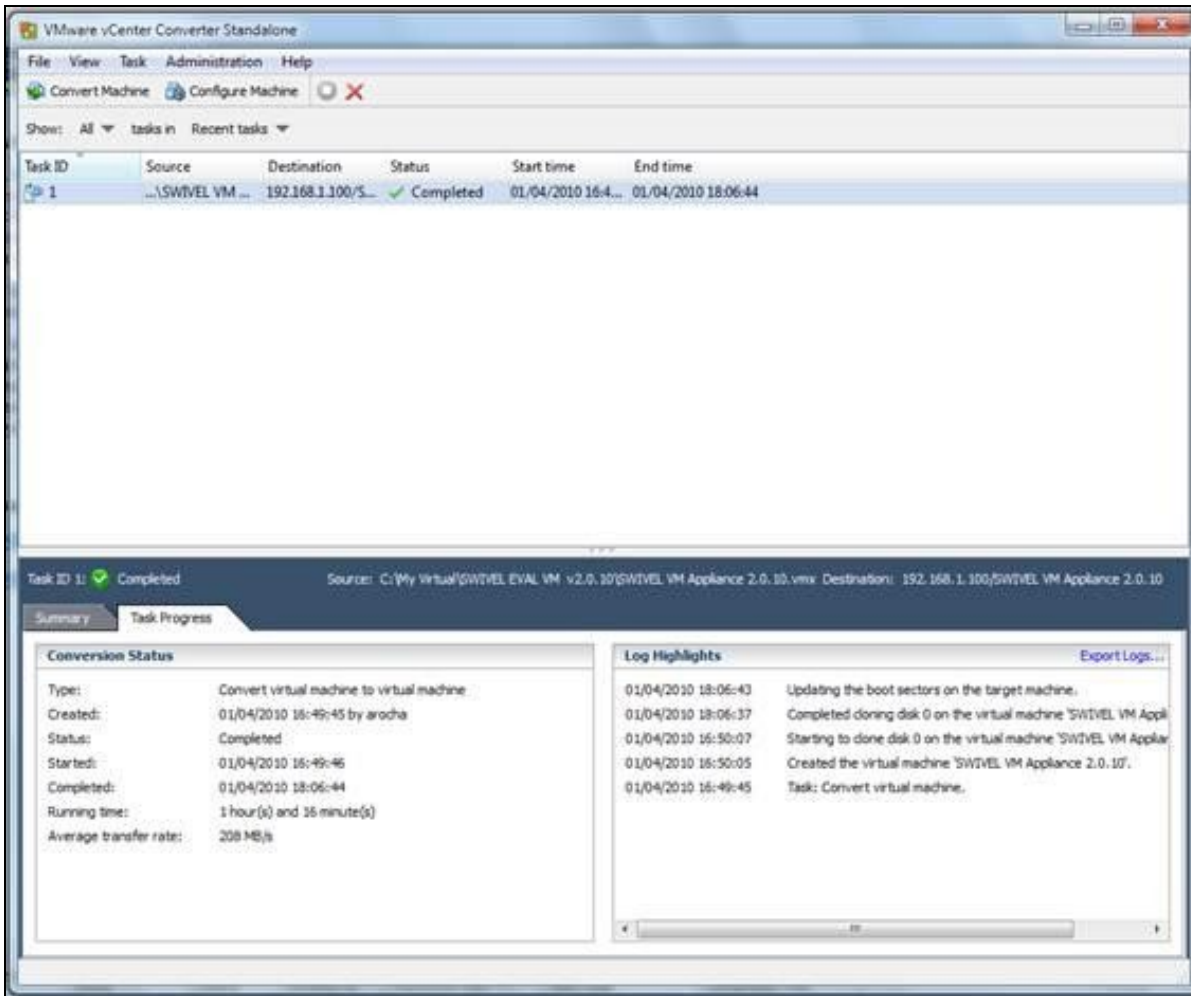


The Estimated time for conversion is displayed. This will normally take between 30 minutes and 2 hours.



Completion is shown under the status





In the VMware vSphere Client and the VMWARE ESXi we can see the Swivel VM.

Select Power on the virtual machine.



Ensure that Power on has been completed.

Recent Tasks							
Name	Target	Status	Details	Initiated by	Requested Start Time	Start Time	Completed Time
Power On virtual machine	SWIVEL VM A...	Completed		root	01/04/2010 19:14:52	01/04/2010 19:14:52	01/04/2010 19:14:55

The Virtual Machine Console can then be launched



The PINsafe Virtual Appliance can now be configured.

## Troubleshooting