

DRAC Card How To Guide

Contents

- 1 DELL Remote Access Controller How To Guide
- 2 Introduction
- 3 Overview
 - ◆ 3.1 Prerequisites
- 4 Baseline
- 5 Architecture
- 6 DRAC Configuration
 - ◆ 6.1 Connecting to the DRAC
 - ◆ 6.2 Login to the DRAC
 - ◆ 6.3 Configure the DRAC Network Interface
- 7 Console redirect through the DRAC Network Interface
- 8 Console configuration of the DRAC Interface
- 9 IP address of the DRAC from the Command Line
- 10 DRAC reset account password

DELL Remote Access Controller How To Guide

Introduction

This outlines the use and configuration of the DELL Remote Access Controller card supplied on the Swivel DELL appliances.

Overview

The DRAC card allows for remote management of the Swivel appliance, and also allows the console to be redirected through a web browser.

Prerequisites

Swivel appliance with DRAC card

Please see the following client-side requirements for each DRAC model respectively:

[DRAC 4 - DELL Readme TXT](#)

[DRAC 5 - DELL Release Notes PDF](#)

[iDRAC 6 - DELL Release Notes PDF](#)

[iDRAC 7 - DELL Release Notes PDF](#)

Baseline

DELL PowerEdge R200

DRAC with firmware 1.7

Architecture

Direct connection through cross-over cable or through network hub or switch

DRAC Configuration

Connecting to the DRAC

Direct connection through cross-over cable or through network hub or switch

Configure the client PC with an IP address on the 192.168.0.0 network (excluding 192.168.0.120)

Connect by a web browser to <http://192.168.0.120>

Login to the DRAC

Login to the DRAC with the following:

Username: root

Password: calvin



The screenshot shows the Dell Remote Access Controller 4/P login interface. At the top, there is a header bar with the Dell logo on the left and navigation links for 'Support', 'Help', and 'About' on the right. Below the header, the IP address '192.168.0.120' is displayed in a yellow bar. The main content area features a light blue rounded rectangle containing the 'Log In' section. This section includes the text 'Log In' in blue, followed by the instruction 'Type in Username and Password, and then click OK.' Below this are two input fields: 'Username' and 'Password'. At the bottom of the login box are two buttons: 'OK' and 'Cancel'.

Configure the DRAC Network Interface

From the DRAC menu select Configuration, and then Network. Change the Network settings to the desired values.

Dell Remote Access Controller 4/P

DELL

Properties | Logs | Configuration | Update | Diagnostics

192.168.0.120 | Network | Alerts | Users | Security | Active Directory

DRAC 4
 Power
 Console
 Media

Network Configuration

Use this page to configure the DRAC 4 network settings.

i Changes to the NIC IP address settings will close all user sessions and require users to re updated IP address settings. All other changes will require the NIC to be reset, which may

[Network Interface Card \(NIC\) Settings](#) • [Email Alert Settings](#)

Network Interface Card (NIC) Settings

MAC Address	00:22:19:be:74:19
Enable NIC	<input checked="" type="checkbox"/>
Use DHCP (For NIC IP Address)	<input type="checkbox"/>
Static IP Address	192 . 168 . 0 . 120
Static Gateway	192 . 168 . 0 . 1
Static Subnet Mask	255 . 255 . 255 . 0
Use DHCP to obtain DNS server addresses	<input type="checkbox"/>
Static Preferred DNS Server	192 . 168 . 0 . 5
Static Alternate DNS Server	192 . 168 . 0 . 6
Register DRAC 4 on DNS	<input type="checkbox"/>
DNS DRAC 4 Name	RAC-D5C984J
Use DHCP for DNS Domain Name	<input type="checkbox"/>

Changing Network values will result in loss of connectivity through the old IP address.

Message from webpage [X]

? You have made changes to the DRAC 4 IP address settings that will close all user sessions. You will have to reconnect to the DRAC 4 Web-based interface using the updated IP address settings. This browser window will close after the settings have been applied.

Are you sure you want to continue?

OK Cancel

Console redirect through the DRAC Network Interface

The DRAC can redirect from the console of the appliance to a web browser session. Select Console then Console Redirect.

Dell Remote Access Controller 4/P Support Help About Log Out

DRAC 4/P @ PowerEdge R200
root, Administrator

DELL

192.168.0.120 Properties

Console Redirect

DRAC 4
Power
Console
Media

Console Redirection

[Print](#) [Refresh](#)

Click *Open Console* to launch the Console Redirect Java applet. The applet may take several minutes to load.

i You may receive security warnings asking if you want to run the Console Redirect applet. Please verify the authenticity of the applet and then click *Yes* to proceed.

Attribute	Value
Current console redirection status	Not active
Maximum console redirection sessions	2
Current console redirection sessions	0

[Open Console](#)

This will open up a Security Warning box asking to run the application, select Run.

Warning - Security [X]

The application's digital signature has an error. Do you want to run the application? 

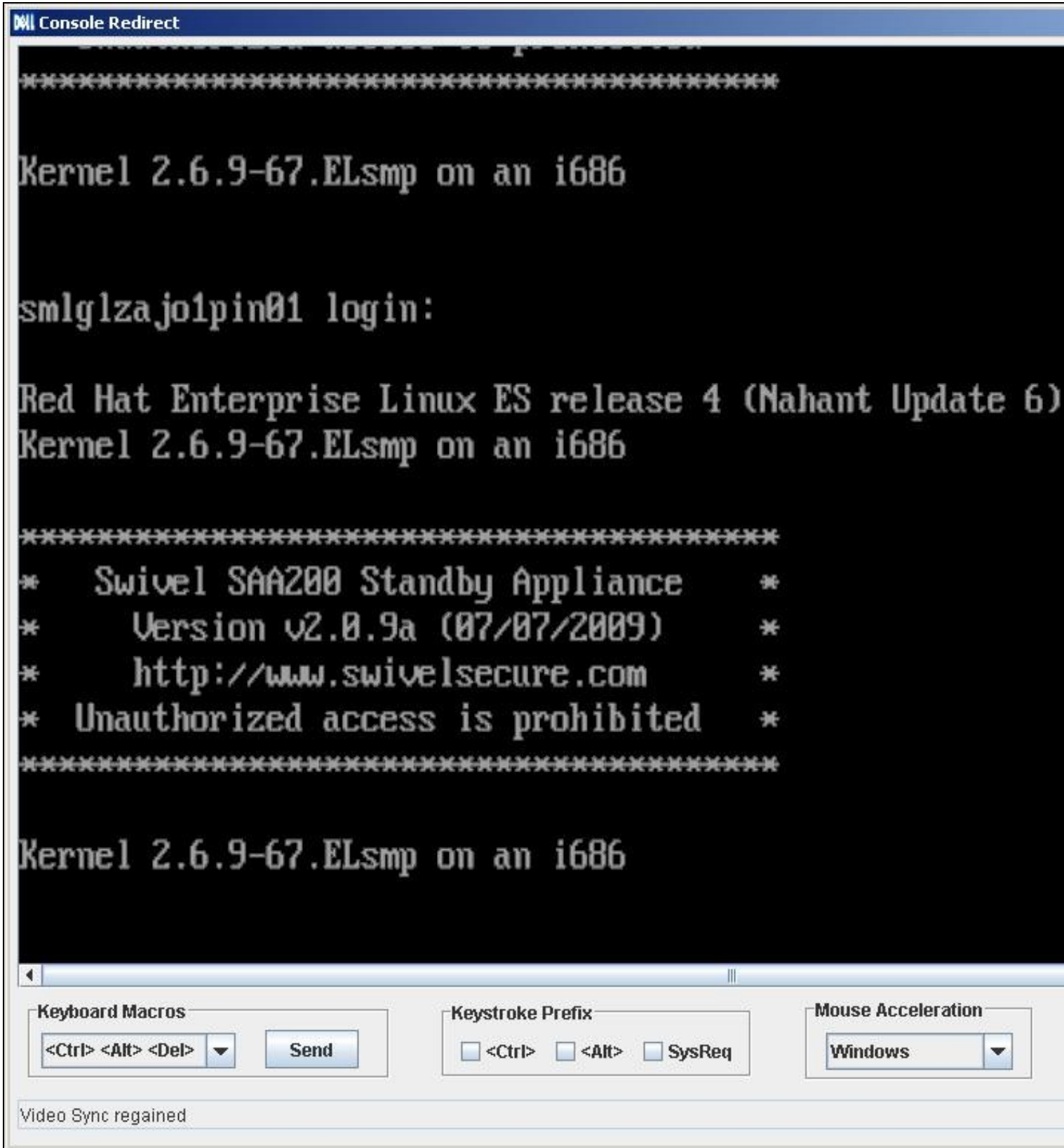
Name: vkvmApplet
Publisher: Dell Inc.
From: https://192.168.0.120

Always trust content from this publisher.

[Run](#) [Cancel](#)

 The digital signature was generated with a trusted certificate but has expired. [More Information...](#)

A window will open allowing access to the console.



Console configuration of the DRAC Interface

Connect to the PINsafe server through the management console connecting a monitor to the VGA port of the DRAC card. Wait for the DRAC configuration option, and press CTRL-D to enter the options menu.

IP address of the DRAC from the Command Line

Login to the CMI and select the Advanced options to get command line access then run the command `racadm getniccfg`

Example:

```
racadm getniccfg
NIC Enabled = 1
DHCP Enabled = 0
IP Address = 192.168.0.120
Subnet Mask = 255.255.255.0
Gateway = 192.168.0.1
```

DRAC reset account password

How to reset config if you cannot remember the password.

You can only do this from the O/S

tool required: racadm

1. This will reset the first account to the default password: calvin
1. to find out the user name of the first account (1) use the following command

```
/opt/dell/srvadmin/sbin/racadm getconfig -g cfgUserAdmin -i 1
```

1. now to reset that password use the following command

```
command line: /opt/dell/srvadmin/sbin/racadm config -g cfgUserAdmin -o cfgUserAdminPassword -i 1 "calvin"
```

If you are unable to access via O/S you will need to boot with System Rescue CD

press F11

Then select SATA CD-ROM device

When prompted press Enter (too select the default boot option)

select 40 for keyboard type (UK)

Once you are at command prompt issue the following commands.

```
ifconfig eth0 192.168.0.99 netmask 255.255.255.0
```

```
route add -net 0.0.0.0 netmask 255.255.255.0 gw 192.168.0.254
```

```
passwd
```

You will now be prompted for passwd please enter lockbox

Find out user name: racadm getconfig -g cfgUserAdmin -i 1

Now issue the command: racadm config -g cfgUserAdmin -o cfgUserAdminPassword -i 1 "calvin"