

# Windows Credential Provider User Guide

## Contents

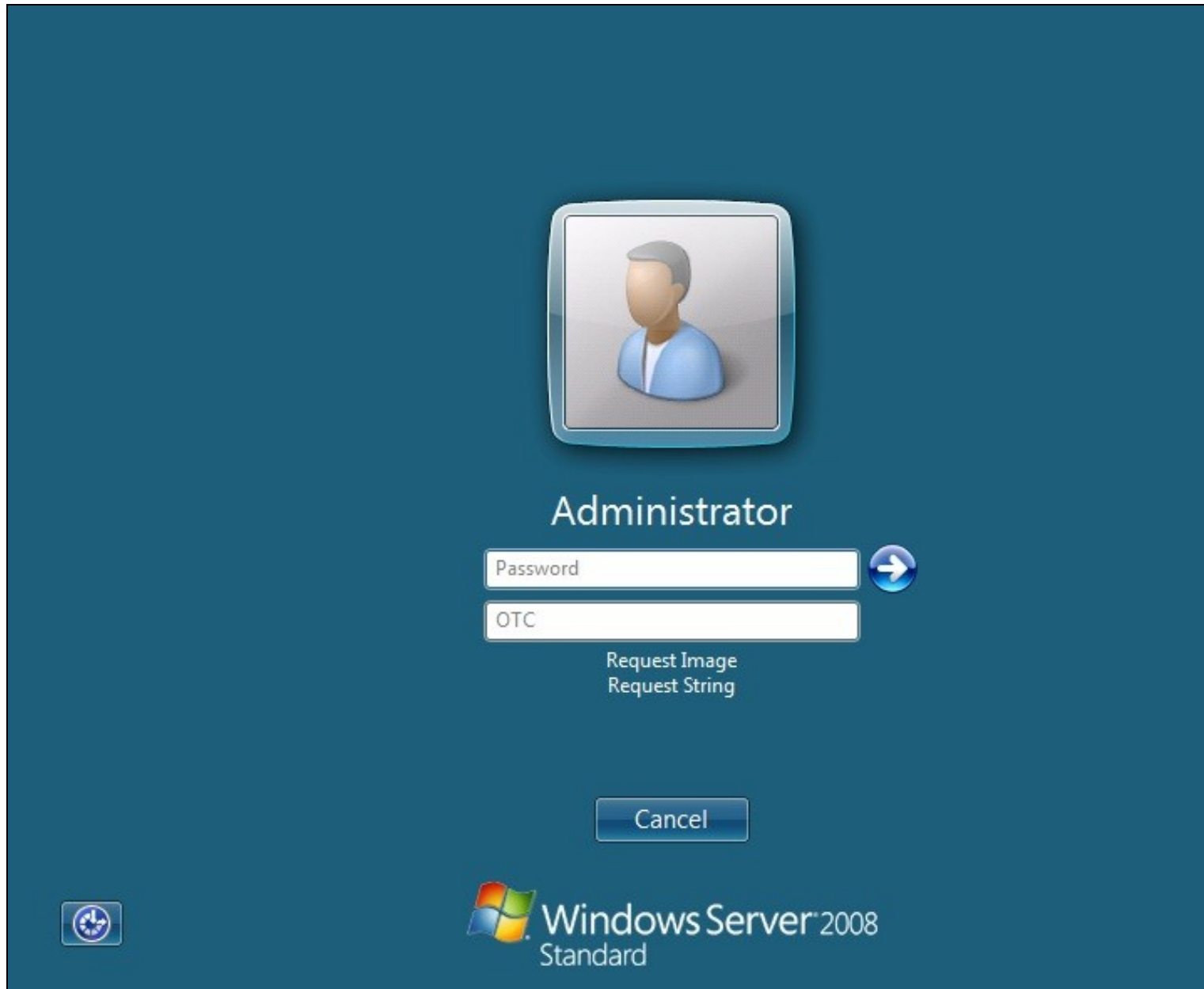
- 1 Overview
- 2 User Login
- 3 ChangePIN
- 4 Troubleshooting

## Overview

PINsafe can be used to protect the Windows login and remote login for Vista, Windows 7 and 2008 server. For the Windows Credential Provider Administrator guide see [Microsoft Windows Credential Provider Integration](#). For the Windows PINsafe GINA for Windows 2000, 2003 and XP see [Windows GINA login User Guide](#).

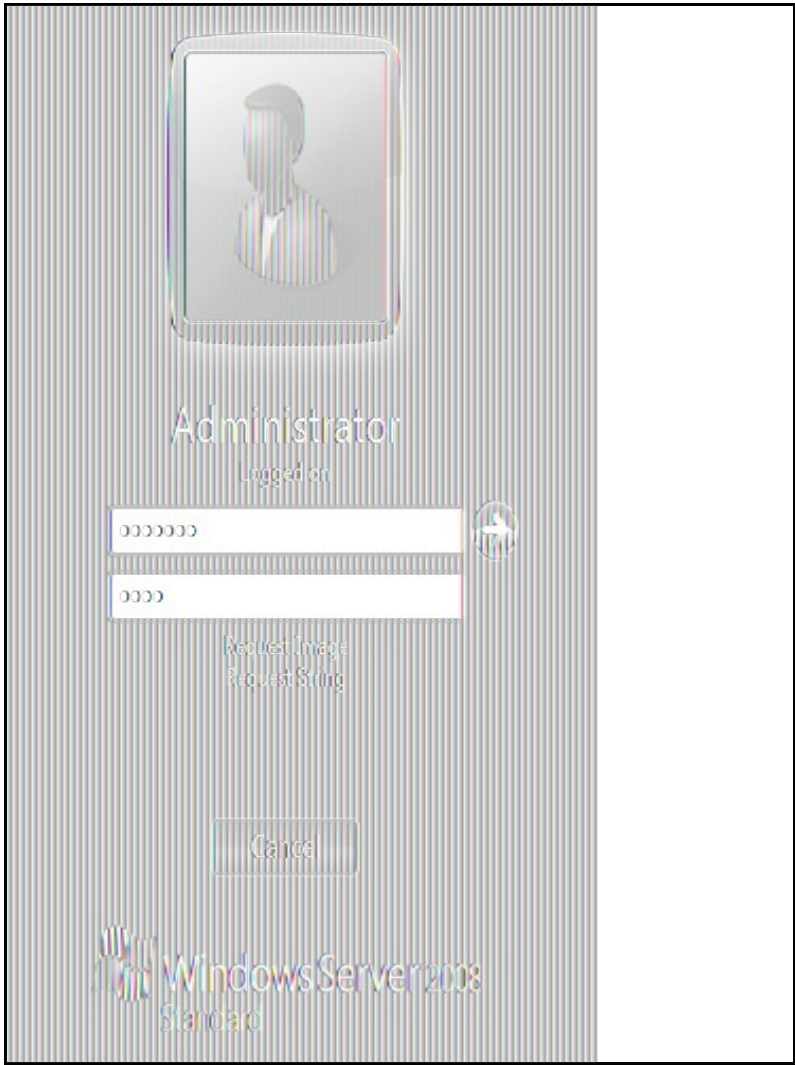
## User Login

A user may login by entering their username, password and One Time Code.

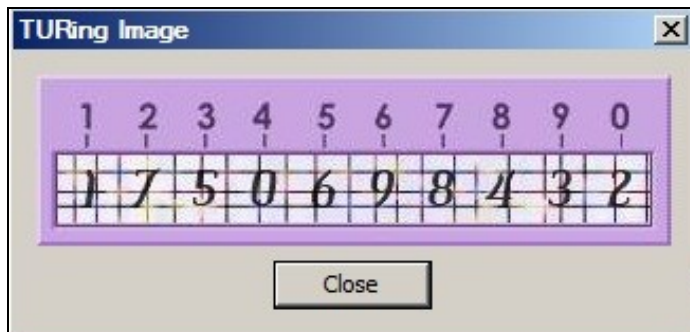


The image shows a Windows Server 2008 login screen. At the top center is a user icon of a man in a blue shirt. Below the icon, the name "Administrator" is displayed. Underneath the name are two input fields: "Password" and "OTC". To the right of the "Password" field is a blue circular button with a white right-pointing arrow. Below the "OTC" field, the text "Request Image" and "Request String" is displayed. At the bottom center is a "Cancel" button. In the bottom left corner is a small icon of a blue circle with a white plus sign. In the bottom right corner is the Windows Server 2008 Standard logo.

The one time code can be sent by an SMS message or a mobile phone client. Do not click Get Message unless the image is to be used for authentication.



A user can also authenticate using a One Time Code generated from a TURING graphical image.



Administrator

.....



OTC

Request Image  
Request String

Cancel



Windows Server<sup>™</sup> 2008  
Standard

For information on the PINsafe security string and PIN extraction see [PINsafe User Guide](#)

## ChangePIN

If the PIN number is required to be changed, then the ChangePIN page will appear. It is also possible to change the PIN and password by using the Ctrl-Alt-Del keys and then Change Password.

Remember with PINsafe, the PIN number is never entered. To change the PIN enter the current OTC, and then enter an OTC for the new PIN.

Example:

```
Security string is 8375210964, current PIN 1234, required new PIN 7890  
OTC 8375  
New OTC 0964  
Confirm New OTC 0964
```

PIN policy may prevent repeated digits or sequences.

Security strings may be changed using security strings from SMS messages, mobile Phone Clients or using a TURING image. Do not click Request Image unless the TURING image is to be used for ChangePIN.



Username

Old OTC

New OTC

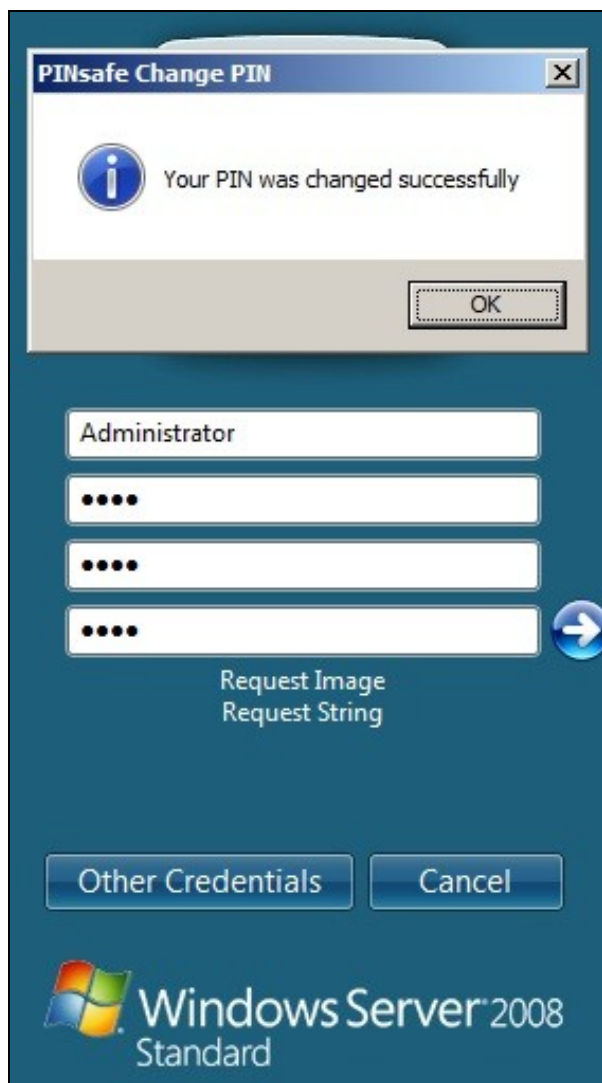
Confirm New OTC

Request Image  
Request String

Other Credentials Cancel

 Windows Server<sup>®</sup> 2008  
Standard

A successful Change PIN will show the message **Your PIN was changed successfully**



## Troubleshooting

Please enter a one-time code first



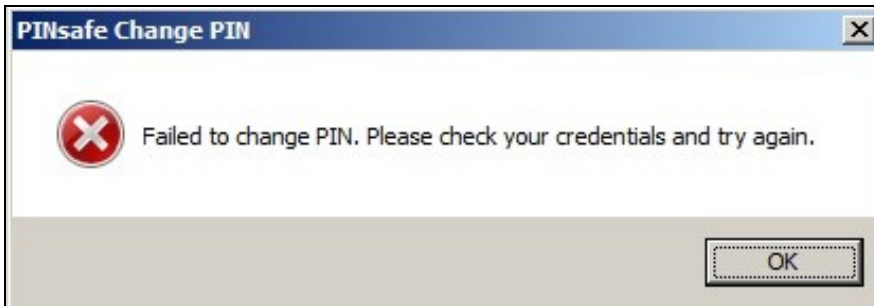
A One Time Code was not entered in the OTC field during login.

The user name or password is incorrect.



The username or password is incorrect.

**Failed to change PIN. Please check your credentials and try again.**



The user has failed to change the PIN number. This could occur if the PINsafe server cannot be contacted.